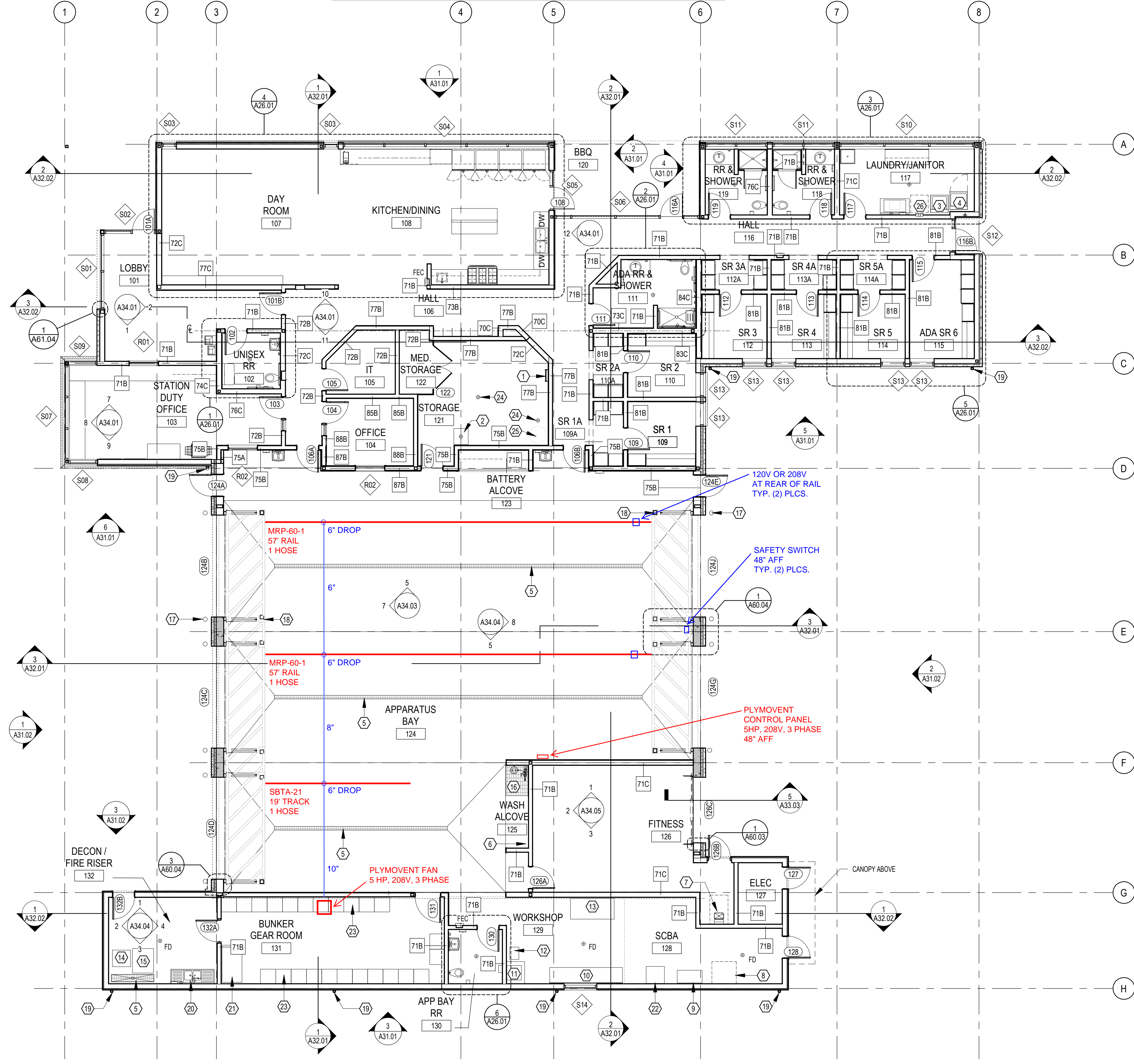


KEY NOTES - FLOOR PLAN	
#	NOTE DESCRIPTION
1	LADDER TO ACCESS TO UNOCCUPIED MECH ROOF PIT ABOVE
3	CLOTHES WASHER, OFCI
4	CLOTHES DRYER, OFCI
5	TRENCH DRAIN
6	MOP RACK, OFCI
7	WATER BOTTLE FILLER, SEE PLUMBING DRAWINGS
8	FIRE RISER AREA
9	BOTTLE AIR FILLER, OFCI
10	WORK TABLE
11	COMPRESSOR FOR PNEUMATIC POWER TOOLS
12	AIR DRYER CONNECTED TO HOUSE COMPRESSOR
13	MOBILE HOSE CART, OFCI

KEY NOTES - FLOOR PLAN	
#	NOTE DESCRIPTION
14	EXTRACTOR, OFCI
15	FUTURE SCBA WASHER
16	GRATING AND FLOOR DRAIN
17	BOLLARD, TYP. SEE ARCH DETAIL
18	BOLLARD WITH CONTROL BUTTON AND POWER, TYP. SEE ARCH AND ELEC FOR DETAILS
19	DOWNSPOUT
20	EYE WASH, SEE PLUMBING DRAWINGS
21	DRYER RACK CABINET, OFCI
22	BOTTLE STORAGE RACK, OFCI
23	BUNKER GEAR LOCKER, OFCI
24	VERIFY WITH PLUMBING FOR EXACT FLOOR DRAIN LOCATION
25	WATER HEATER PER PLUMBING
26	FUTURE STACKING WASHER/DRYER OFCI

NOTES & LEGEND - FLOOR PLAN	
1. DIMENSIONS ARE TO ROUGH FRAMING OR TO FACE OF EXISTING FINISHES, TYP UNO.	
2. DIMENSIONS INDICATED AS "MIN" OR "CLR" ARE FROM NEAREST FINISH SURFACE, INCLUDING TRIM.	
3. ROUGH DOOR OPENINGS ARE LOCATED 4" FROM NEAREST INTERSECTING WALL FRAMING, TYP UNO.	
4. EQUIPMENT INDICATED BY IS OFCI ITEMS. LOCATION SHOWN IS REFERENCE ONLY.	
5. FLOOR DRAIN LOCATION IS APPROXIMATE. VERIFY WITH PLUMBING FOR EXACT LOCATION.	
ROOF OVERHANG	5' DIAMETER TURNING SPACE
FLOOR DRAIN	CLEAR FLOOR SPACE 30' X 48' UNO
CONCRETE PIER	
EXT RIGID INSULATION	



1 ANNOTATION FLOOR PLAN - LEVEL 1
1/8" = 1'-0"

